

SUPERNOVA
Euro Series

400kVA to 2250 kVA
22500 kVA when paralleled



REGISTERED OFFICE

SUPERNOVA ENGINEERS LIMITED
B Wing, F-2, First Floor, Shapath Hexa, Opp. Gujarat High Court,
S.G.Highway, Ahmedabad - 380 060. Gujarat, INDIA.
Call - +91 79-66111136/37/38/39/40
Email - marketing@supernovagenset.com, inquiry@supernovagenset.com
Web - www.supernovagenset.com

Branches

- BENGALURU : #4C, 209, 4th Cross, East of NGEF, Kasturinagar, Bengaluru- 560 043, Tel.: 090356 60066
- CHENNAI : 1B & 1C, Shivanandam Complex, 3rd Floor, Pulla Avenue, Thiru Vi Ka Park, Shenoyanagar, Chennai - 600 030, Tel.: 094433 86416
- COIMBATORE : No.81, Dr. Nanjappa Road, Chenny's Chamber, Coimbatore - 641 018, Tel.: 0422 4959414
- DELHI/UP : B-220, Pacific Business Park, 37/1, Site-IV, Sahibabad Industrial Area, Ghaziabad, (UP) - 201 010 Tel.: 098181 17599
- HYDERABAD : 6 & 7, Premises No. 1-7-319, 3rd Floor, Panchsheel Towers, Park Lane, Secunderabad - 500 003, Tel.: 099127 26415
- MUMBAI : 204/205, Agarwal Arcade - VI, Nr. Juhinagar Railway Station, Sector-I, Nerul, Navi Mumbai-Pune Road, Navi Mumbai - 400 706 Tel.: 098797 18477
- PATNA : B-22, Luv Kush Tower, Exhibition Road Crossing, Patna - 800 001, Tel.: 099343 60092
- RANCHI : 502, Estate Plaza, Kantatoali, Old HB Road, Behind Mangal Tower, Ranchi - 834 001, Tel.: 099343 60092

MFG. FACILITIES

- RAJPUR : 1470/1, Village Rajpur, Tal, Kadi, Dist. Mehsana, North Gujarat,
- MEHSANA : Tel.: 7069004225 / 7069004226
- SILVASSA : Survey No. 263/3/2/1, Silvassa Dadra Nagar Haveli. Tel.: 0260-2681069



Powered by
Perkins®
Diesel Power

zero
compromise
decision

SUPERNOVA



Supernova Diesel Electric Gensets are powered by Perkins Diesel Engine ranging from 400kVA to 2250kVA. Each Supernova Diesel Electric Genset is manufactured under stringent quality assurance process and undergoes in-house testing. Engine performance corresponds to ISO 3046, BS 5514 and DIN6271. The technical data applies to an engine operating on a fuel with a calorific value of 42.7 MJ/Kg(10200 Kcal/Kg) and a density of 0.86 Kg/Liter and as per BS 2869 Part 2 1998 Class A2 or ASTM D975D2. AC Generator performance corresponds to IEC-34, IS-4722

The unmatched fuel efficiency and ease of maintenance are the key factors which makes them preferred choice of customers.

Salient features:

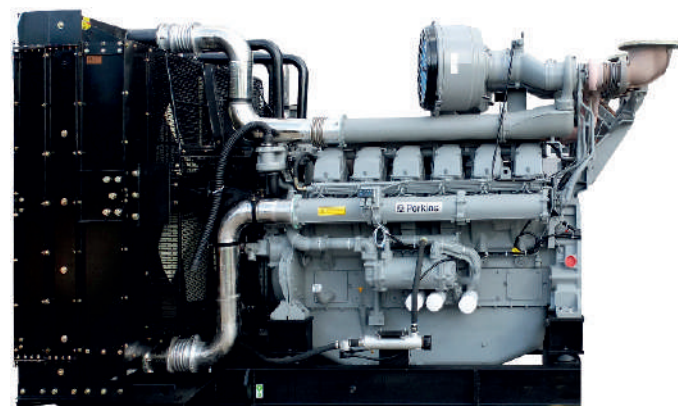
- | Six Cylinder in Line upto 750kVA, eight Cylinder Inline for 1010 kVA
- | Twelve Cylinder VEE Engine from 1250kVA to 1700kVA D.G. Set application
- | Compact Size for Easier Transportation and Installation
- | High Block Loading Capability Due to Split Exhaust System
- | Commonality of Components Over the Entire Series of Engines
- | Low Operating and Maintenance cost
- | Excellent Power to Weight Ratio
- | Designed to Provide Excellent Service Access for Ease of Maintenance

Types for D.G. Sets

- | Open Type D.G.Sets (above 1010 kVA)
- | Silent D.G. Sets (Mandatory up to 1000 kVA)
- | Containerized D.G. Sets

Standard Scope Comprising Of:

Diesel Engine / AC Generator / base frame / Standard Control Panel / Radiator / Silencer / Battery & Battery Cables / AVMs / First Fill of Lub. Oil / First Fill of Coolant / D.G. Set Controller / fuel tank / wiring harness / Sensors.



Options Available:

- | Voltage Options: 415 V / HT-3.3/6.6 /11 kv
- | Cooling Systems: Remote Radiator / Heat Exchanger
- | Electrical Options: Auto Mains Failure / Auto Synchronizing Panels / CRM / NIS / NGR/VCB
- | Standard Switchgear - L&T/Schneider, other makes can be offered on request
- | Standard Controllers - Woodward / DIEF / DeepSea, other makes can be offered on request

Rating Table

RADIATOR COOLED PRIME POWER 1500RPM (50Hz) 3 Ph., 415V, 0.8 PF						Shipping Dimensions (Acoustic Enclosure)		
GENSET MODEL	ENGINE MODEL	BHP	Rated kVA	Rated kW	Length	Width	Height	Weight
SP 400	2206D-EI3TAG3	492	400	320	5550	2000	2790	5400
SP 500	2506D-EI5TAG2	607	500	400	5600	2200	3020	6900
SP 625	2806D-EI8TAGIA	724	625	500	5600	2200	3020	7400
SP 750	4006D-23TAG2A	894	750	600	6900	2600	3760	9900
SP 800	4006-23TAG3A	945	800	640	6900	2600	3760	9939
SP 1010	4008 TAG2A	1206	1010	808	8312	2600	3760	13340
SP 1010	4008-30TAG2	1206	1010	808	8312	2600	3760	13340
SP 1125	4008-30TAG3	1270	1125	900	8312	2600	3760	15000
SP 1250	4012-46TAG0A	1497	1250	1000	9112	2600	3760	16456
SP 1364	4012-46 TAG1A	1625	1364	1091	9112	2600	3760	16800
SP 1500	4012-46TAG2A	1785	1500	1200	9112	2600	3760	17354
SP 1700	4012-46TAG3A	2006	1700	1360	9112	2600	3750	18150
SP 1850	4016-61TRG1	2208	1850	1480	10363	3300	3950	23233
SP 2000	4016-61TRG2	2377	2000	1600	10363	3300	3950	24033
SP 2250	4016-61TRG3	2647	2250	1800	10363	3300	3950	25081

Rating Guidelines:

Prime Power:

Prime Power rating corresponds to ISO standard power for continuous operation. It is applicable for supplying electrical power at variable load for an unlimited number of hours instead of commercially purchased power. This is as per ISO 8528.

Service Support:

PAN India spares availability through strategically located stock points across the country. Services offered through a strong network of seven area offices and resident engineers located at Tier II and Tier III cities and through service dealers.

Warranty:

As per our offer

*Technical Detail are subject to change if recommended by principal manufacturer.